



Mid-MO  
Regional Planning  
Commission

# Annual Report 2022

Enhancing communities. Building a stronger region.





# Mid-MO Regional Planning Commission

BOONE | CALLAWAY | COLE | COOPER | HOWARD | MONITEAU

The Mid-MO Regional Planning Commission (Mid-MO RPC) is an association of local governments serving the six-county region of Boone, Callaway, Cole, Cooper, Howard, and Moniteau counties. Our work is focused on building a stronger region through planning, local technical assistance, and regional collaboration. The guiding principles of the organization are to serve as an advocate for the region, maintain a professional staff to serve as a resource for member governments, provide a forum for local officials to discuss regional issues and concerns, and promote community and economic development.

Our focus areas include community and economic development, transportation, homeland security, and hazard mitigation. We provide a variety of services to our communities including project development and grant writing, grant administration, environmental reviews, GIS mapping, planning, and other technical assistance. Much of our work is focused on assisting our communities with securing state and federal funding for their priority projects.

## Federal and State Partners

The work activities of Mid-MO Regional Planning Commission would not be possible without the support of our federal and state partners.



# Board of Directors FY22

## Boone County

Dan Atwill - Boone Co.  
Chris Cox - Centralia

## Callaway County

Gary Jungermann - Callaway Co.  
Dennis Houchins - Fulton  
Hanna Thomas - Holts Summit

## Cole County

Harry Otto - Cole Co.  
Sonny Sanders - Jefferson City  
Doug Reese - St. Martins

## Cooper County

Don Baragary - Cooper Co.  
Ned Beach - Boonville  
Justin Hein - Bunceton

## Howard County

Jeremiah Johnmeyer - Howard Co.

## Moniteau County

Mac Finley - Moniteau Co.  
Mike Kelley - Tipton

## At-Large Members

Marsha Broadus  
Les Hudson

# Executive Officers FY22

## Chairman

Mike Kelley

## Vice-Chairman

Mac Finley

## Past-Chair

Gary Jungermann

## Secretary

Hanna Thomas

## Treasurer

Jeremiah Johnmeyer

## Personnel Chair

Les Hudson

# Mid-MO RPC Staff



David Bock  
Executive Director



Lincoln Brown  
Grant Administrator



Jennifer Bowden  
Transportation Planner  
GIS Specialist



Melissa Stafford  
RHSOC Coordinator  
Regional Planner



Luke Dietterle  
Recovery Coordinator



Becky Bias  
Fiscal Officer

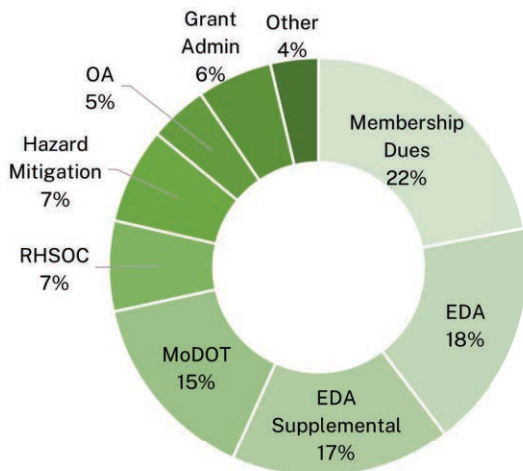


Debra Griffin  
Administrative Assistant

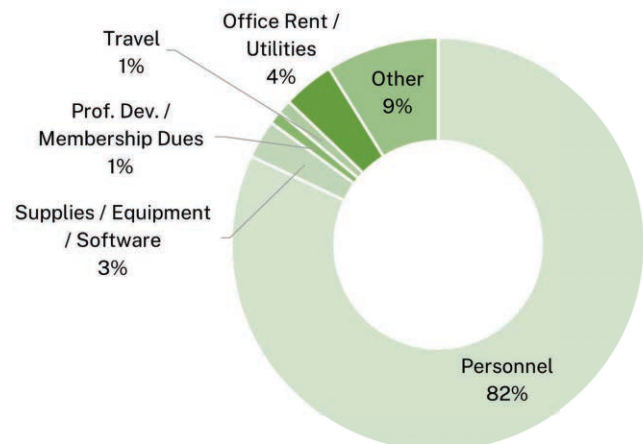
# FY22 Financial Overview

Mid-MO Regional Planning Commission revenues come from a combination of funding sources. Our funding begins with local membership dues from our city and county government members. We use those dues as match to bring in additional revenue from the federal Economic Development Administration (EDA) and the Missouri Department of Transportation (MoDOT). We also receive funding from the Missouri Office of Homeland Security (OHS) for our work with Region F Regional Homeland Security Oversight Committee (RHSOC), Missouri State Emergency Management Agency (SEMA) funding for hazard mitigation planning, and annual funding from the Missouri Office of Administration (OA). Our final budget gap is filled through contracts with our local governments for grant administration and local planning services.

FY22 Income by Percentage



FY22 Expenses by Percentage



\$188,253 of equipment and supplies procured for Region F RHSOC as part of our role in Missouri's regionalization of homeland security program

\$141,650 expended through our EDA COVID supplemental for the following: entrepreneurship coach, zoning code redevelopment, downtown revitalization planning, and a buy local campaign

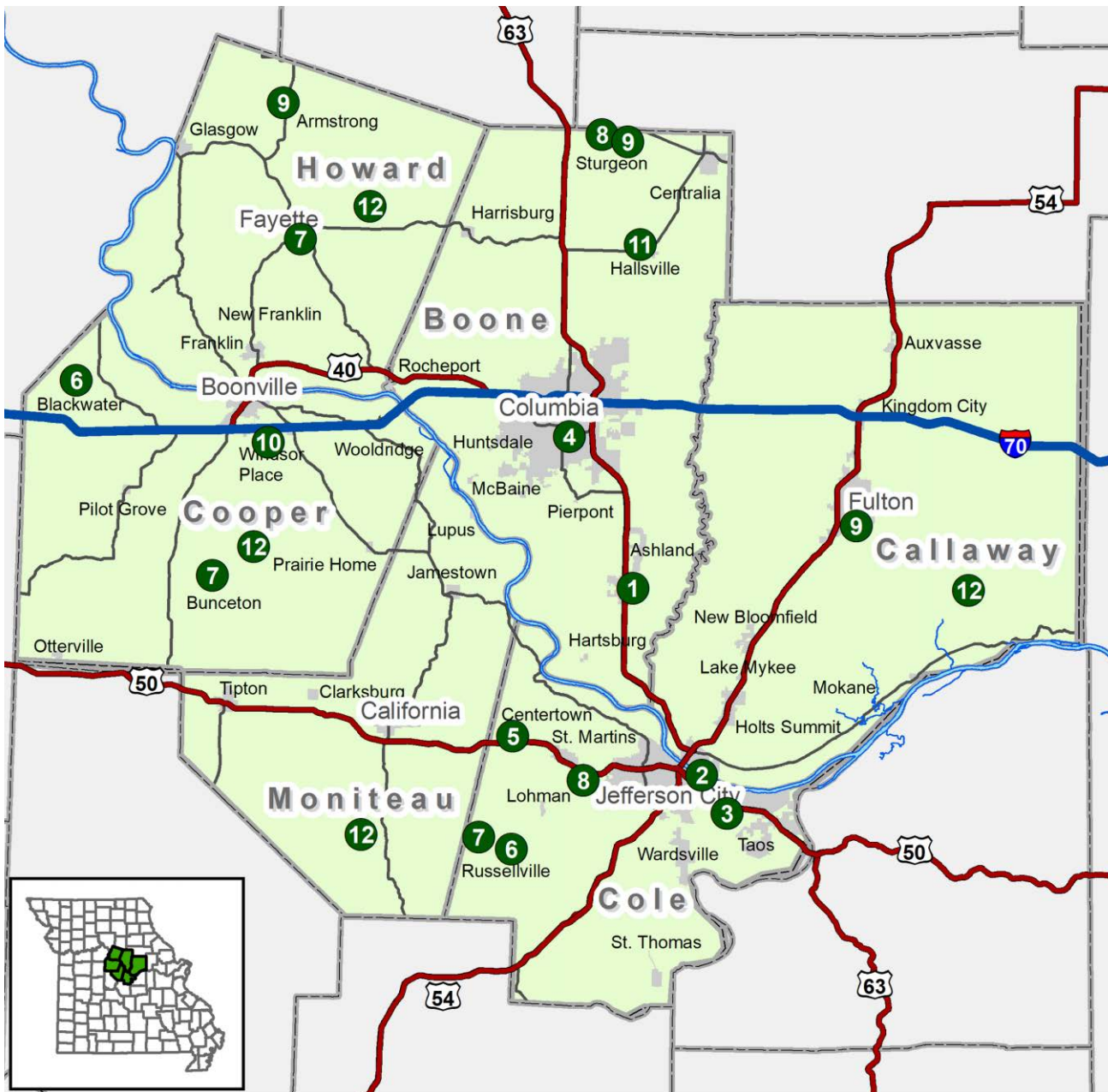
\$504,378 in approved small business loans to five borrowers through our new Mid-Missouri Revolving Loan Fund

# Projects Around the Region



Mid-MO Regional Planning Commission is dedicated to working with our cities, counties, and other regional partners to enhance our region. Whether it's project development, grant writing, grant administration, environmental review,

planning, or GIS services, we are here to assist our communities in any way we can. Here are just some of the projects we've assisted our communities with over the past year.





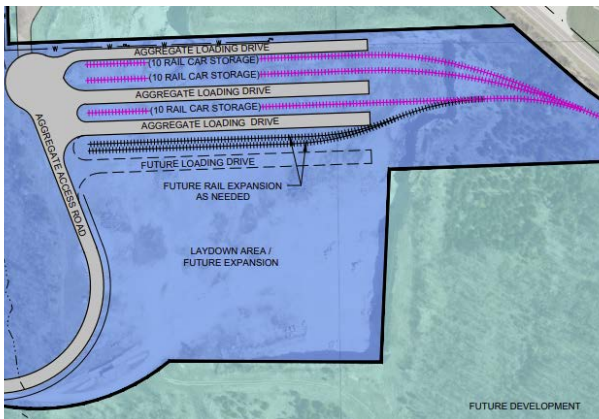
## 1. Ranken Technical College

Mid-MO RPC worked with a strong leadership team in Southern Boone County and Ranken Technical College to secure a \$4.5 million grant from the Economic Development Administration (EDA) to help construct a new workforce development training center in Ashland. Curriculum will have an emphasis on construction trades, healthcare, manufacturing, and IT training.



## 2. Cole County EMS Facility

Mid-MO RPC assisted Cole County and the City of Jefferson secure a \$2 million grant to help construct a new EMS facility. The grant is part of a special funding round from the Community Development Block Grant (CDBG) program tied to the CARES Act. The facility will help improve response times in low-to-moderate income areas of the city.



## 3. Cole County Multimodal Transload Facility

Cole County has secured two grants to support the construction of a multi-modal transload facility that will serve as a shared access point to rail service that any business in mid-Missouri will be able to utilize. Mid-MO RPC provided project development and grant writing services to help secure the \$1.5 million EDA grant and \$880,000 MoDOT Freight Enhancement grant.



## 4. Columbia Agriculture Park

Mid-MO RPC provided the City of Columbia and the Columbia Farmer's Market with project development assistance which helped them secure a \$1.3 million grant from EDA to expand their covered pavilion from its current 40 stall configuration to 98 stalls upon completion. The market brings vendors from a 50-mile radius including from all six Mid-MO RPC counties.



## 5. Centertown Water Tower

Mid-MO RPC assisted Centertown with securing a \$625,000 Community Development Block Grant (CDBG) which was combined with a DNR grant and local funds to construct a new water tower for the community. Mid-MO RPC served as grant administrator for the CDBG funds on the project.



## 6. Road and Stormwater Projects - Blackwater and Russellville

Blackwater and Russellville have both secured CDBG grant funding for road and stormwater improvements. Mid-MO RPC worked with each community to develop competitive projects, assisted with their applications, and is serving as grant administrator on each project.



## 7. Wastewater Projects - Bunceton, Fayette, and Russellville

Bunceton, Fayette, and Russellville have all been awarded \$500,000 in CDBG grant funding to make improvements to their wastewater systems. Mid-MO RPC assisted each community with their CDBG application and is serving as grant administrator on each project.



## 8. Stormwater Projects - Sturgeon and Cole County

Sturgeon and Cole County have both secured CDBG grants for stormwater improvements. The Sturgeon project will make improvements throughout the community, while the Cole County improvements will focus on S. Brooks Drive just outside of Jefferson City. Mid-MO RPC assisted with the grant applications and will serve as grant administrator on the projects.





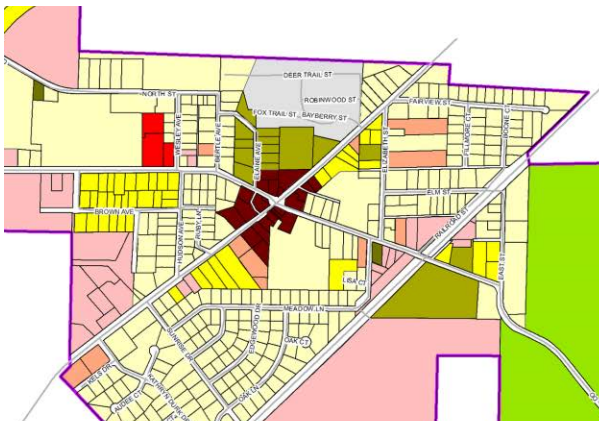
### 9. Demolition of Unsafe Structures - Armstrong, Fulton, and Sturgeon

Mid-MO RPC assisted Armstrong, Fulton, and Sturgeon secure CDBG grant awards to demolish dangerous buildings in their communities. Mid-MO RPC is providing Armstrong and Sturgeon with grant administration services on these projects and is assisting Fulton with the environmental review component of their project.



### 10. Co-Mo Electric Certified Site Application

Mid-MO RPC assisted Co-Mo Electric Cooperative with the process of applying for a certified site designation for a location in Cooper County as part of the Missouri Department of Economic Development's Certified Sites Program.



### 11. Hallsville Comprehensive Plan

Mid-MO RPC is working with Hallsville to complete a comprehensive plan for their community. Comprehensive plans are important tools for planning and zoning enforcement, setting community priorities, and they increase competitiveness for a variety of grant opportunities.



### 12. Hazard Mitigation Plans - Callaway, Cooper, Howard, and Moniteau

Mid-MO RPC has been working in Callaway, Cooper, Howard, and Moniteau counties to complete the five-year updates to their county hazard mitigation plans. These plans are required in order for cities, counties, and school districts to remain eligible for FEMA hazard mitigation grant funding opportunities.



# Community & Economic Development

Mid-MO Regional Planning Commission's community and economic development work program is guided by our Comprehensive Economic Development Strategy (CEDS) that has been developed through outreach to our cities, counties, economic development organizations, and other stakeholders in our region.

A primary focus of our organization has always been working with our cities, counties, and other partners to secure funding for infrastructure improvements that will advance community and economic development at the local and regional level.

Community development projects often focus on improving community infrastructure such as roads, water, wastewater, stormwater, or other infrastructure improvements. They may also focus on quality-of-life improvements such as parks, trails, and sidewalk projects.

Our role in economic development often focuses on securing grant funding for projects that will advance economic development in the region. We assist cities and counties with securing funding for public infrastructure projects, such as road improvements or water/wastewater line extensions, that will support new or expanding businesses. We are also engaged in projects that focus on workforce development, entrepreneurship, broadband, and more.

Working with partners from around the region we have also established a revolving loan fund (RLF) that can provide gap financing for entrepreneurs and small business owners that are not able to secure all of their financing from traditional lending institutions. Our RLF can be used to purchase equipment, machinery, land, buildings, and for working capital.

# Mid-MO Revolving Loan Fund (RLF)

## What is the Revolving Loan Fund (RLF)?

The Mid-MO Revolving Loan Fund (RLF) is designed to serve as a gap financing tool that allows entrepreneurs who cannot acquire full financing from a traditional lender to secure a loan from the RLF for the remaining costs needed to start a new business or further develop an existing business. The RLF typically funds 30% of a project with borrowers securing 60% from a local lending institution, and the remaining 10% of project costs provided by the borrower themselves.

## What can the RLF loan funds be used for?

- Working capital and inventory
- Machinery, equipment, and supplies
- Furniture and fixtures
- Purchase of land and buildings
- Business acquisitions (if necessary to create/retain jobs)
- Vehicles (if necessary to create/retain jobs)
- Other start-up costs

## How was the RLF created?

The Mid-MO Revolving Loan Fund was created with the assistance of a \$1.5 million federal grant from the Economic Development Administration (EDA) with local match coming from the Mid-MO Regional Planning Commission, Regional Economic Development, Inc. (REDI), Columbia Chamber of Commerce, Jefferson City Industrial Development Authority, and Cole County Commission.

## RLF Success Stories

This year the Mid-MO Revolving Loan Fund approved our first five loans. \$504,378 in funds were approved which leveraged an additional \$1.1 million in private investment and will result in the creation or retention of 16 jobs in our region. While private investment and job creation are metrics we use to measure success, the real value lies in the products and services these entrepreneurs are bringing to mid-Missouri.

The RLF has been privileged to assist the great granddaughter of Sicilian immigrants enhance her ability to bring her family recipes to market, help a doctor purchase and expand a chiropractic practice in Boonville, allow a local franchisee to bring a national coffee chain to Ashland, aid an entrepreneur in creating an innovative indoor play space and coffee shop in Columbia, and support a hair stylist bringing a new full-service salon to Boonville.



Adore Salon



# Transportation

Transportation planning is among the core activities of Mid-MO RPC, which we are able to provide through our planning partnership with MoDOT.

As part of our planning partnership with MoDOT, Mid-MO RPC is responsible for maintaining an updated Regional Transportation Plan (RTP), coordinating and facilitating regional transportation discussions through our Transportation Advisory Committee (TAC), annually reviewing and prioritizing transportation projects on the state system in our region, and providing technical assistance to our member local governments.

Transportation related technical assistance often includes project development and grant writing activities that help address transportation needs in the region. It also involves Mid-MO RPC completing local transportation plans or transportation elements of local comprehensive plans.

Mid-MO RPC's annual update to our Regional Transportation Needs List begins

with meetings in each of our six counties where city and county officials meet to discuss the transportation needs of their individual jurisdictions. Participants are asked to identify high, medium, and low priority road and bridge projects and multimodal projects — rail, port, airport, pedestrian, transit — in their county. They also identify their top three road and bridge projects for prioritization at the regional level.

This information is then shared with Mid-MO RPC's Transportation Advisory Committee (TAC) which is made up of representatives from each of our six counties. TAC discusses the local needs identified through the county-level meetings and recommends a final list of transportation priorities based on regional need. These projects are then shared with MoDOT Central District with the goal of having projects move onto MoDOT's Unfunded Needs List and ultimately into MoDOT's Statewide Transportation Improvement Program (STIP) — MoDOT's plan of which projects it will undertake over the next five years.

# Mid-MO Road and Bridge Priorities Move to STIP

The Mid-MO Transportation Advisory Committee (TAC) has put forward several road and bridge priorities that have been added to MoDOT's Statewide Transportation

Improvement Program (STIP) in the last year. This includes some larger projects that were made possible through increased transportation funding.

## Mid-MO Priorities on MoDOT's STIP (5-year Construction Plan)

Project	Description
I-70 / US 63 Interchange	Modify interchange configuration at I-70 and US 63 Connector
Centralia - Hwy 22, 124, 151 Intersection	Intersection safety improvements at Rte. 22, Rte. 124, and Rte. 151 in Centralia.
MO River Bridge (Jefferson City)	3rd lane (east and west bound) added from Missouri River Bridge to US 63 interchange.
I-70 / US 54 Interchange	Interchange improvements to I-70 / US 54 at Kingdom City
MO 5 / US 40 Intersection	Intersection safety improvements at MO 5 and US 40 south of New Franklin to address Y-intersection
Howard County Low Volume Routes	Pavement improvements on multiple low volume routes in Howard County

# Multi-Modal Transportation Grants

Mid-MO Regional Planning Commission staff have been active this year pursuing grant opportunities that will allow some of our regionally identified multi-modal transportation priorities to move forward.

Mid-MO RPC worked with a team that included JCREP and Cole County to secure a \$1.5 million EDA grant to extend a rail line on the east side of Jefferson City and construct a multi-modal transload facility. This site would

serve as a shared access point to rail service for any business in mid-Missouri. The team was also able to secure an \$880,000 MoDOT grant for the project.

Mid-MO RPC staff also worked with the Howard/Cooper County Regional Port Authority to apply for a \$4 million Maritime Administration grant to make improvements to their port facility. Award announcements for this program are anticipated in Fall 2022.



# Region F - RHSOC

## Regional Homeland Security Oversight Committee

Mid-MO Regional Planning Commission is responsible for assisting the Region F Regional Homeland Security Advisory Committee (RHSOC), with both planning and procurement activities as part of Missouri's regionalization of homeland security framework.

RHSOCs are multi-discipline oversight committees established across the state and are utilized as part of a governance structure and process to facilitate local, community level engagement in grant funding priorities and other homeland security related decisions.

Region F RHSOC is comprised of sixteen disciplines: 911, Agriculture, City or County Public Works, County Commissioner, County Health, County Sheriff, Director of Emergency Management, Education, Emergency Medical Service, Fire Agencies, Geographic Information System (GIS), Homeland Security Response Team, Municipal Government, Police Agencies, Private Industry/Public Utility, and Volunteer Sector.

Mid-MO RPC assists Region F RHSOC through the planning process that identifies threats and risks to the region as well as regional capability gaps.

Local units of government have the opportunity to then apply for funding to purchase equipment and supplies that will help address these gaps through State Homeland Security Program regionalization grants. RHSOC scores and prioritizes applications for funding, and Mid-MO RPC is the entity responsible for procuring all of the equipment and supplies for the awarded projects in Region F.

Region F RHSOC traditionally supports the Mobile Emergency Operations Center (MEOC), Cole County Homeland Security Response Team (HSRT), and Boone County Incident Support Team (IST). Multiple mobile generators, mobile messaging signs, and MOSWIN radio purchases around the region have also been supported by Region F RHSOC.

# Region F RHSOC FY21 Projects

Mid-MO RPC is responsible for all procurement activities associated with projects awarded regionalization funding through the State Homeland Security Program (SHSP) in Region F.

In Mid-MO RPC's FY22, Region F RHSOC scored applications for FY21 SHSP regionalization funding. Below is the complete list of projects awarded funding in Region F.

## FY21 State Homeland Security Program (SHSP) Regionalization Grants - Region F

Project	Amount
Osage County Sonar System	\$41,162
Cole County Homeland Security Response Team	\$32,462
Cole County Mobile Emergency Operations Center (Equipment)	\$20,133
Miller County Electronic Message Board	\$16,868
Cole County Homeland Security Response Team (Supplies)	\$16,100
Cooper County Mobile Radios	\$14,562
Callaway County Light Tower	\$11,869
Audrain County Light Tower	\$9,990
Cooper County Light Tower	\$9,194
Camden County Mobile Radios	\$9,004
Callaway County Portable Meteorological Station	\$5,904
Cole County Ballistic Vests	\$5,662
Boone County IST Satellite Internet/Phone Service	\$4,668
Camden County Lights	\$4,340
Callaway County Electronic Message Board Batteries	\$2,980
Cooper County ID Badging	\$2,835
Generator Load Testing (Multiple Counties)	\$8,700



# Hazard Mitigation

An important component of our planning and technical assistance services is assisting our local governments prepare for and mitigate the impact of future disaster events.

Mid-MO RPC is responsible for maintaining and updating county-wide hazard mitigation plans in each of our six counties. The counties, municipal governments, school districts, and other stakeholders in each county are asked to participate in the planning process.

Hazard mitigation plans assess each jurisdiction's mitigation capabilities, analyze the risk associated with a variety of natural hazards that may impact an area, and identify action items that each jurisdiction may undertake to mitigate the impact of these disaster events.

Hazard mitigation plans are required for any jurisdiction seeking FEMA funding for projects that will mitigate the impact of future natural disasters. Tornado safe rooms, flood buyouts, stormwater improvements, warning sirens, generators, and undergrounding of power lines are all examples hazard mitigation projects.

This year Mid-MO RPC worked with local governments, school districts, and other stakeholders in Callaway, Cooper, Howard, and Moniteau counties to update their hazard mitigation plans. Each plan has now been approved by FEMA. All jurisdictions that have adopted these plans will maintain eligibility for FEMA's Building Resilient Infrastructure and Communities (BRIC), Hazard Mitigation Grant Program (HMGP), and Flood Mitigation Assistance (FMA) grants.

**Callaway Co. Hazard Mitigation Plan 2022**

**Cooper Co. Hazard Mitigation Plan 2022**

**Howard Co. Hazard Mitigation Plan 2022**

**Moniteau Co. Hazard Mitigation Plan 2022**





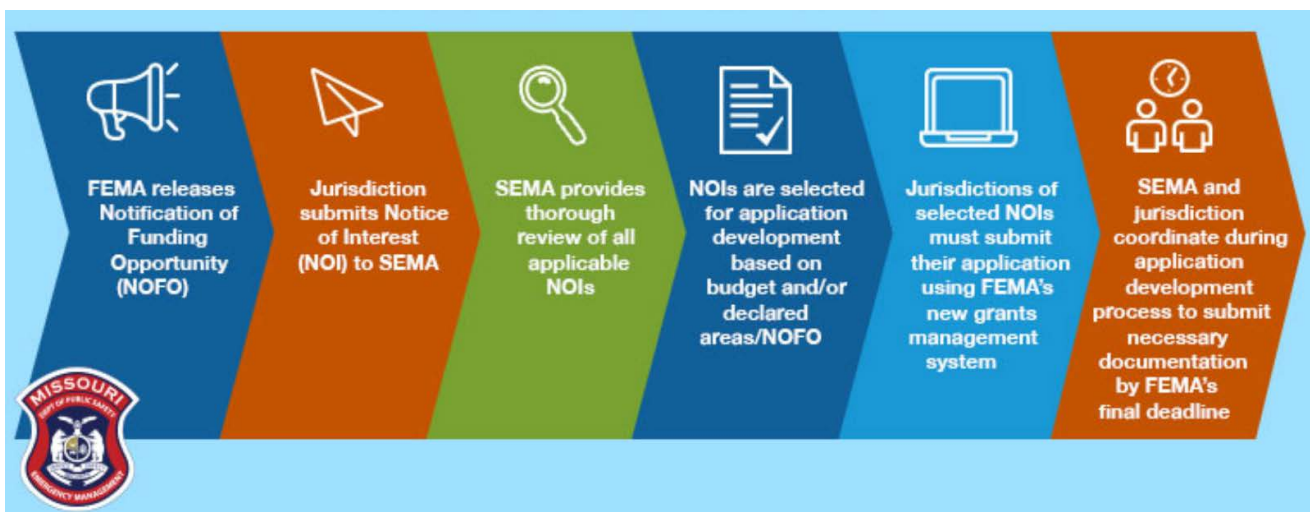
# FEMA Hazard Mitigation Funding

FEMA hazard mitigation funding may be used to address action items identified in the hazard mitigation planning process and can be divided into three different funding categories: Hazard Mitigation Grant Program (HMGP), Building Resilient Infrastructure and Communities (BRIC), and Flood Mitigation Assistance (FMA).

HMGP and BRIC funding may be used on a variety of projects, such as, tornado safe rooms, stormwater improvements, warning sirens, generators, undergrounding of utility lines, and more. HMGP is a post-disaster grant program, which means that it is only available after a county has been included as part of a federally declared disaster. BRIC and FMA funding are both non-disaster annually allocated programs. FMA funding may be used for projects that reduce or eliminate the risk of repetitive flood damage to buildings insured by the National Flood Insurance Program.

Jurisdictions seeking HMGP, BRIC, or FMA funding all go through a similar process. After FEMA releases their Notice of Funding Opportunity (NOFO), local jurisdictions must submit a Notice of Interest (NOI) to SEMA which includes the basic elements of the proposed project including scope of work, cost estimate, and source of matching funds. SEMA will then review submitted NOIs and select projects to submit full applications.

Mid-MO RPC has experience with this process and is available to work with communities interested in pursuing FEMA hazard mitigation funding. SEMA's Mitigation Management website is also a great place for communities to learn more about hazard mitigation funding: [https://sema.dps.mo.gov/programs/mitigation\\_management.php](https://sema.dps.mo.gov/programs/mitigation_management.php).





## Missouri Association of COUNCILS OF GOVERNMENT

The Missouri Association of Councils of Local Governments (MACOG) is the statewide organization of Missouri's nineteen regional planning commissions (RPCs) and councils of governments (COGs).

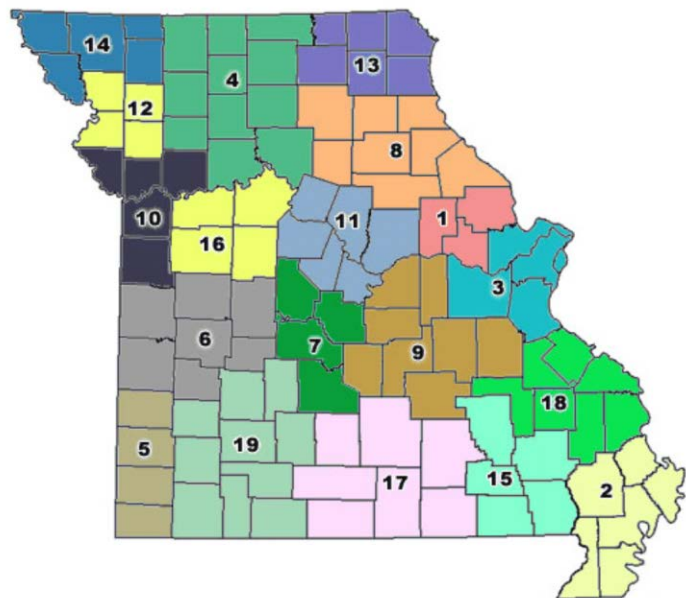
This statewide network allows RPCs and COGs in Missouri to coordinate on statewide planning and technical assistance initiatives including the MoDOT planning framework, the regionalization of homeland security through RHSOCs, FEMA hazard mitigation planning, and more. MACOG has also been involved in statewide efforts to combat and recover from COVID-19. As part of this effort, MACOG will be an

integral partner with the state moving forward in 2022 with a broadband planning effort that will provide important broadband planning studies for eight multi-county clusters in the most broadband challenged areas of the state.

MACOG also serves as a professional development resource for RPCs and COGs. RPC and COG Executive Directors from across the state meet monthly to hear from state and federal agencies and discuss programs and funding opportunities that may benefit local governments. It also serves as a forum for the sharing of best practices among RPCs and COGs.

### Missouri Regional Planning Commissions and Councils of Government

1. Boonslick Regional Planning Commission
2. Bootheel Regional Planning Commission and Economic Development Commission
3. East-West Gateway Council of Local Governments
4. Green Hills Regional Planning Commission
5. Harry S Truman Coordinating Council
6. Kaysinger Basin Regional Planning Commission
7. Lake of the Ozarks Council of Local Governments
8. Mark Twain Regional Council of Governments
9. Meramec Regional Planning Commission
10. Mid-America Regional Council
11. Mid-Missouri Regional Planning Commission
12. Mo-Kan Regional Council
13. Northeast Missouri Regional Planning Commission
14. Northwest Missouri Regional Council of Governments
15. Ozark Foothills Regional Planning Commission
16. Pioneer Trails Regional Planning Commission
17. South Central Ozark Council of Governments
18. Southeast Missouri Regional Planning and Economic Development Commission
19. Southwest Missouri Council of Governments







**Mid-MO Regional  
Planning Commission**  
BOONE | CALLAWAY | COLE | COOPER | HOWARD | MONITEAU

Planning.  
Technical Assistance.  
Regional Collaboration.