



Annual Report 2019

Mid-Missouri Regional Planning Commission

Message from the Chairman

For most including myself, 2019 will be remembered as the year of the “TORNADO”. The EF-3 tornado struck Cole County (Jefferson City) on the evening of May 22, 2019 and destroyed many properties, but left no fatalities. It will also be remembered for the flooding that lasted 60+ days and the MIGHTY MO River that would not recede. A very wet spring keeping farmers out of their fields and delaying construction projects.

With ALL these challenges and more, central Missouri residents are resilient and resourceful. We won't be knocked out. We help our neighbors and we never give up. Nothing was more apparent after the tornado struck and people rolled up their sleeves and helped each other. After I was briefed by Emergency Management and all departments, I drove to our EMS headquarters and was truly amazed by the number of ambulance units waiting for deployment. We had mutual aid from many ambulance districts and there was probably 15 services present.

It was very calming to see emergency services ready to help and knowing that we had the tools we needed to get the task done. Many of these assets were acquired with the assistance of the RPC thru RHSOC including the MEOC (mobile emergency operations center), multiple generators, electronic message boards, radio's and a mobile radio tower just to name a few.

I am glad that we invested in warning sirens in Cole County and our communities. Greatful that we had highly skilled people trained in running an emergency operation. We jumped in with both feet, made quick decisions, had an outpouring of assistance from many faith based groups and did as much as possible to get roads cleared, brush removed, power & utilities restored to get back to a normal life.

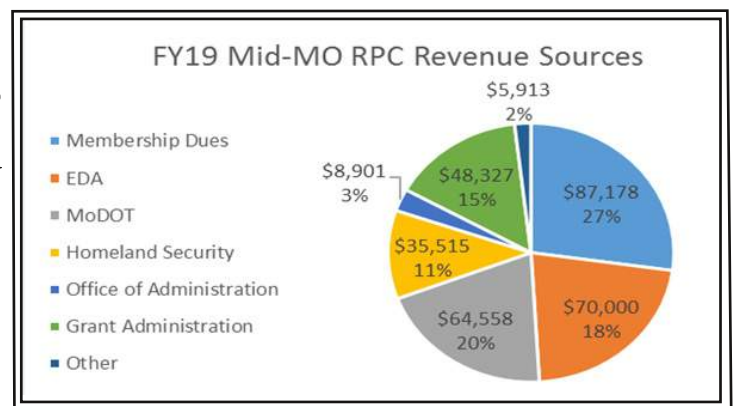
I will close with this: I thank the RPC for helping us to secure regional assets for events like the “TORNADO”. I thank our NEIGHBORS for helping us in our time of need and I thank GOD for keeping us all safe.

Kris Schepeler
Cole County Commissioner

Executive Director Opening Remarks

I am pleased to present the Mid-Missouri Regional Planning Commission's FY2019 Annual Report. I'd like to begin with a quick overview of the organization's financial position and leave the remainder of the report to highlight the work that your regional planning commission staff has completed this fiscal year to assist our local governments.

I am happy to report that the financial position of the organization is strong. Operating revenues for FY2019 totaled \$320,392 while expenses were just \$300,961 for a surplus of \$19,431. The chart to the right shows a breakdown of our revenue sources for the year. Revenue for FY19 remained strong despite being a year in which we did not receive any funding through our FEMA hazard mitigation planning. A strong year in grant administration revenue made up this difference. Moving into FY2020, our projected revenues are \$349,626 and projected expenses are \$324,108.



The remainder of the report will provide a summary of the activities and projects undertaken to support our local government membership this past year. Staff always strives to provide value to our local governments, and I hope that value shines through in this report. We were excited this year to expand Mid-MO RPC services to include traffic counts and benefit-cost analysis reports, and we look forward to finding new ways to serve our communities this year and in the years to come.

David Bock
Mid-MO RPC Executive Director

2018-2019 EXECUTIVE OFFICERS



Chairman
Kris Scheperle



Past Chairman
Gary Jungermann



Vice-Chairman
Mike Kelley



Secretary
Don Baragary



Personnel Chairman
Les Hudson

BOARD OF DIRECTORS

Boone County

Dan Atwill - Boone Co.
Gene Rhorer - Ashland
Chris Cox - Centralia

Cole County

Kris Scheperle - Cole Co.
Steve Crowell - Jefferson City
Virginia Bayne - St. Martins

Howard County

Jeremiah Johnmeyer - Howard Co.
Robin Triplett - Fayette
Walter Banks - New Franklin

Callaway County

Gary Jungermann - Callaway Co.
Dennis Houchins - Fulton
Hanna Lechner - Holts Summit

Cooper County

Don Baragary - Cooper Co.
Ned Beach - Boonville
Justin Hein - Bunceton

Moniteau County

Mac Finley - Moniteau Co.
Norris Gerhart - California
Mike Kelley - Tipton

At-Large-Members

Marsha Broadus
Les Hudson

Mid-Missouri Regional Planning Commission

The Mid-Missouri Regional Planning Commission (Mid-MO RPC) is an organization of city and county governments within the six-county region of Boone, Callaway, Cole, Cooper, Howard and Moniteau counties. Mid-MO RPC primarily works in the three key areas of community and economic development, transportation, and emergency preparedness. Within these three—often overlapping—areas of emphasis, Mid-MO RPC is responsible for multiple planning initiatives and performs a variety of technical assistance activities.



Technical assistance activities performed by the regional planning commission take a variety of forms. Grant writing and grant administration are central to the technical assistance role of the regional planning commission. Over the past five years alone, Mid-MO RPC has assisted communities secure more than \$6.5 million in grant funding. Environmental review and GIS mapping are also core technical assistance services that the organization provides to our local governments.

Core planning documents that the regional planning commission is responsible for maintaining include a regional Comprehensive Economic Development Strategy (CEDS) as part of our planning partnership with the Economic Development Administration (EDA), a Regional Transportation Plan (RTP) as part of our planning partnership with MoDOT, and hazard mitigation plans for each of our six counties. Mid-MO RPC also assists local governments with their local planning needs including comprehensive plans, land use and transportation planning, and other planning studies or reports as requested by our local governments.

Mid-MO RPC also serves as administrative and procurement support for the Region F Regional Homeland Security Advisory Committee (RHSOC), procuring emergency response equipment that can be shared as regional assets. Mid-MO RPC has procured more than \$4.7 million in equipment for the RHSOC since 2004.

Collaboration and Partnerships

The work activities of the Mid-Missouri Regional Planning Commission would not be possible without collaborations and partnerships with numerous federal and state agencies. These established relationships assist with financial and technical support on projects identified by our local government membership.



Mid-MO RPC Region



Boone County

Callaway County

Cole County

Cooper County

Howard County

Moniteau County

COMMUNITY AND ECONOMIC DEVELOPMENT

Overview

The focus of Mid-MO RPC's community and economic development activities is on providing technical assistance to communities for projects that promote infrastructure development. These activities take on many forms, including: working with communities to identify funding sources, project development activities, grant writing and administration, environmental reviews, planning studies, benefit-cost analysis reports, and GIS mapping services.

We use a broad definition of what we consider public infrastructure. Often times our activities are focused on traditional infrastructure projects like road improvements or wastewater system upgrades. But we also focus our efforts on any type of infrastructure that may improve our communities. For example, this past year we helped communities apply for grant funding for a new fire truck, improvements to a senior housing facility, park improvements, and demolition of unsafe structures.

Our community and economic development activities are made possible thanks to our partnership with the federal Economic Development Administration (EDA). Mid-MO RPC utilizes dues paid by our member local governments as match to bring in annual EDA funding for the organization. This annual funding from EDA supports all of the community and economic development activities discussed in this report.

Project Spotlight: American Outdoor Brands Distribution Center

When American Outdoor Brands (AOB) was looking for a location for its new distribution center, Boone County was a compelling option given the availability of a large 200-acre site with close proximity to I-70. Regional Economic Development, Inc. (REDI) took the lead locally to bring this facility to Mid-Missouri along with the assistance of Boone County staff and the Mid-Missouri Regional Planning Commission.

Mid-MO RPC's role in the process was to assist Boone County with securing \$1.8 million in Community Development Block Grant (CDBG) funding for public infrastructure improvements that were needed to support the new AOB distribution facility. CDBG funding was used to improve sight distance along Route Z for cars and trucks entering and exiting the facility. A turn lane was also added to Route Z near the distribution facility and a new county road was constructed that will give the AOB facility improved safe access to Route Z. In time, this new road will also serve future businesses as they develop in the area. Improvements to the I-70 and Route Z interchange were also included in the project.

The new 600,000 square foot AOB distribution center is now operational and the company has hired more than 93 new employees. AOB met CDBG's national employment objective by hiring previously low-income job applicants and providing them with better pay and benefits. More than 51% of new hires were low-to-moderate income when they were hired.

Mid-MO RPC has continued to be involved throughout the project, serving as grant administrator on the CDBG funds. Mid-MO RPC's grant administration activities included completing the environmental review for the project and assisting Boone County with all CDBG procurement, contract, and prevailing wage compliance.

Economic Development Advisory Committee (EDAC)

A critical partner in our economic development program is the Economic Development Advisory Committee (EDAC). EDAC is comprised of community leaders throughout the region including economic development professionals, elected officials, utility provider representatives, chamber of commerce representatives, senate and congressional staff, university officials, and other interested parties.

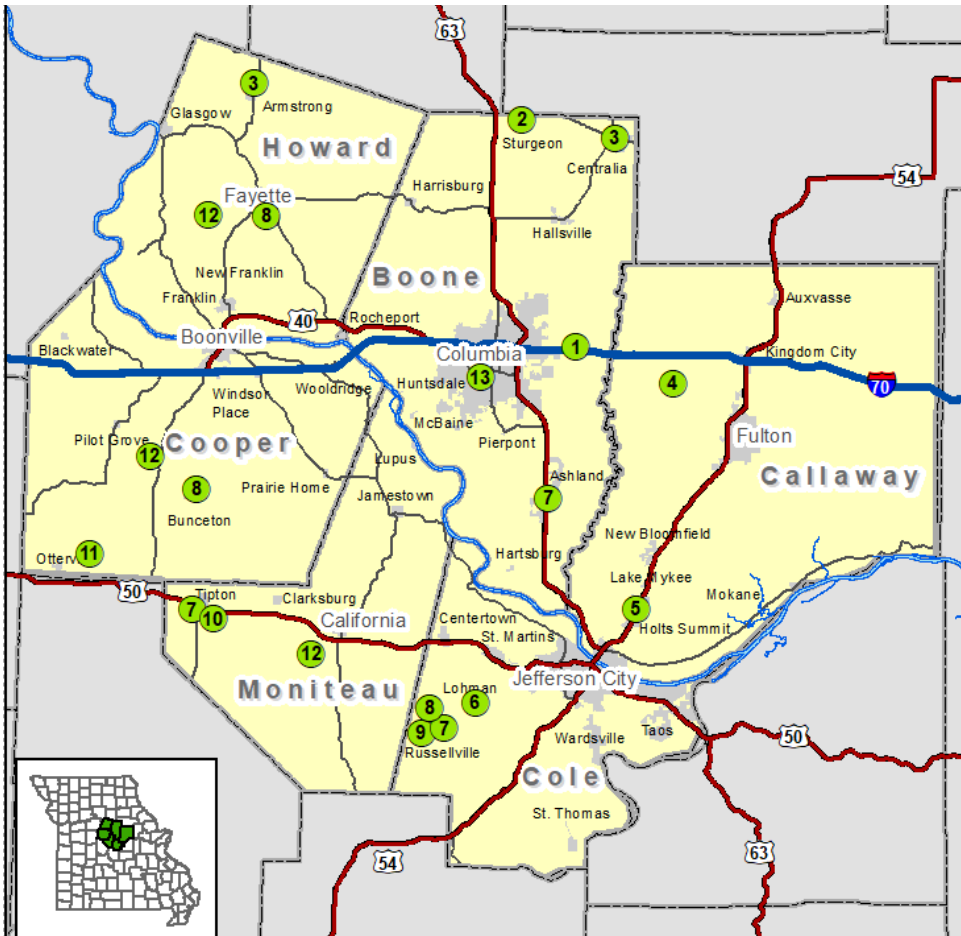
The committee's function is to provide a forum for the exchange of ideas to promote economic development in the region.



EDAC Chair Mike Kelley
Moniteau County Regional Economic
Development Council



Mid-MO RPC Technical Assistance Projects 2018-2019



1. Boone County Infrastructure Improvements for American Outdoor Brands



Boone County secured a \$1.8 million Community Development Block Grant (CDBG) for infrastructure improvements to Route Z and Enterprise Drive that accommodates the new American Outdoor Brands (AOB) distribution center. The new AOB distribution facility is 600,000 sq. ft. and AOB has created more than 93 new jobs as part of the project. Mid-MO RPC assisted with preparing the grant application, prepared the environmental review, and has served as grant administrator for the project.

2. Sturgeon Senior Housing Renovation Grant Application



Mid-MO RPC assisted Sturgeon's low-income senior housing facility apply for more than \$660,000 in grant funding to make improvements to their two 16-unit complexes. Improvements would include new HVAC systems, foundation repair, window replacements, and numerous ADA improvements. ADA improvements are vital to the seniors living in the apartments that have limited mobility. The Sturgeon facility's application is extremely competitive. Funding announcements will be made in December of 2019.

3. Demolition of Unsafe Structures—Centralia & Armstrong



Mid-MO RPC assisted the communities of Centralia and Armstrong with Community Development Block Grant (CDBG) applications to demolish unsafe structures in their communities, and both projects were awarded grant funding. The Centralia project will provide \$78,000 to demolish two commercial buildings in town. The Armstrong project will provide \$125,000 to demolish seven residential structures in that community. Mid-MO RPC will also be performing the environmental reviews and serving as grant administrator for both of these projects.

4. Callaway County Regional Sewer District Study



Mid-MO RPC assisted Callaway County with preparing an application for Missouri Department of Natural Resources (MoDNR) 604(b) Watershed Planning funding. The project was awarded \$80,000 in grant funding to assist with the administrative and financial setup of Callaway County's new regional sewer district. The funding will also support a study that will look at an initial construction plan for centralized wastewater collection and treatment options for the new sewer district.

5. Holts Summit Inflow & Infiltration Mitigation



The City of Holts Summit secured a \$315,000 CDBG grant to fix inflow and infiltration issues in two of the city's older subdivisions. As grant administrator, Mid-MO RPC activities include ensuring that the procurement process and contracts are in line with CDBG standards. We also work with contractors to ensure that prevailing wage laws are being followed.

8. Wastewater Improvements—Bunceton, Fayette & Russellville



Bunceton, Fayette and Russellville have all been awarded \$500,000 in CDBG grant funding to make improvements to their wastewater systems. Mid-MO RPC has assisted each community with the CDBG applications, completed or will complete the environmental review for each project, and will be serving as grant administrator for each project.

11. Traffic Count—Old Route 50, Cooper County



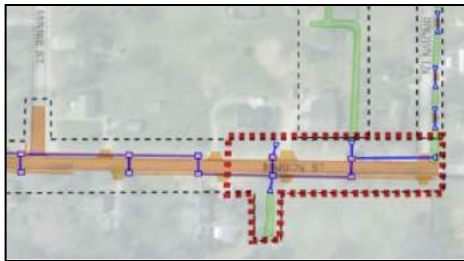
Mid-MO RPC deployed its new traffic counter for the first time along Old Route 50 in Cooper County just east of Otterville. The traffic count was conducted for the Cooper County Commission. Mid-MO RPC uses a radar based traffic counting system that also provides traffic speed data.

6. Lohman City Hall / Community Center ADA Improvements



The City of Lohman received a CDBG grant to complete ADA improvements to its City Hall/Community Center. Improvements will include an ADA compliant ramp and bathroom renovations. Mid-MO RPC prepared the CDBG grant application, will serve as grant administrator for the project, and is currently completing the environmental review.

9. Russellville Road and Stormwater Grant Application



Mid-MO RPC assisted the City of Russellville with preparing a \$500,000 CDBG grant application for road and stormwater improvements. As part of the application process, Mid-MO RPC assisted with a community income survey to ensure that the city qualified for CDBG funding. Given the large local match, Mid-MO RPC is optimistic about funding being awarded.

12. Sidewalk Inventories—Cooper, Howard & Moniteau



Mid-MO RPC—as part of our planning partnership with MoDOT—is responsible for maintaining a sidewalk inventory for communities in our region. This year inventories were completed for communities in Cooper, Howard, and Moniteau counties. Sidewalk inventories include an assessment of current sidewalk condition.

7. GIS Mapping Assistance—Ashland, Russellville & Tipton



Mid-MO RPC's GIS technical assistance projects this year:
Ashland: Updated the city's zoning map.
Russellville: Converted paper maps to GIS format. Sewer, water, gas and fiber lines were all included.
Tipton: Mapped possible annexation locations as part of planning for future Hwy 50 bypass.

10. Tipton DNR Outdoor Recreation Grant



Mid-MO RPC assisted the City of Tipton with preparing a \$75,000 DNR Land and Water Conservation Fund (LWCF) grant application for a new upgraded shelter house. The city would also be able to repurpose the existing shelter house by moving it to the local fair grounds. Mid-MO RPC also performed the environmental review for the project.

13. Boone County Hazard Mitigation Plan



Mid-MO RPC began the process of completing the mandatory five-year update to Boone County's FEMA approved Hazard Mitigation Plan (HMP). HMPs identify actions to reduce or eliminate risk to life and property from natural hazards. The plans are required in order for jurisdictions to qualify for FEMA hazard mitigation grants.

TRANSPORTATION PLANNING

Overview

Transportation planning is among the core activities of the Mid-Missouri Regional Planning Commission.

Mid-MO RPC is responsible for annually reviewing and updating our list of regional transportation needs on the MoDOT system. This is accomplished through coordination with our Transportation Advisory Committee (TAC), local government representatives, and public comment. High priority projects for the Mid-MO RPC region include: the construction of a new Missouri River bridge along I-70 near Rocheport, improvements to the I-70/US 54 interchange in Kingdom City, improvements to the I-70/US63 interchange, expanding US 50 to four-lanes from California to Sedalia, safety improvements to at-grade crossings on US highways in the region, 2 foot shoulders on state lettered routes, and improvements to the Columbia Regional Airport.

Mid-MO RPC also maintains an updated Regional Transportation Plan, facilitates regional transportation discussions through our TAC, and provides technical assistance to local governments on local transportation plans and transportation related grant funding opportunities. These transportation planning activities are made possible through our planning partnership with MoDOT.

Mid-MO RPC's Role in MoDOT's Transportation Alternatives Program (TAP)

Mid-MO RPC plays an integral role in the process of prioritizing projects for MoDOT's Transportation Alternatives Program (TAP). TAP funding can be used for sidewalk construction, implementing traffic calming techniques, and other safety-related infrastructure.

Mid-MO RPC meets with MoDOT and the other regional planning commissions (RPCs) and metropolitan planning organizations (MPOs) in MoDOT's Central District to help prioritize which projects will receive TAP funding. Before this Central District prioritization meeting takes place, the Mid-MO RPC Transportation Advisory Committee (TAC) reviews and prioritizes all TAP applications in the Mid-MO RPC region. These TAC priorities weigh heavily in the ultimate funding determination. Mid-MO RPC staff also score each TAP project in the MoDOT Central District and submit these scores to MoDOT where they are aggregated with the scores from each RPC and MPO in the Central District. These scores are also a factor in the ultimate funding determination.

In 2019, Mid-MO RPC was fortunate to have sidewalk projects funded in both Pilot Grove and Fayette. Pilot Grove had been identified by Mid-MO RPC's TAC as the top regional priority, and Fayette scored well in the aggregated staff scoring from all Central District planning partners. Pilot Grove's sidewalk project will connect two local schools and give both schools access to a new stretch of sidewalk along Hwy 135/College Street. Fayette's sidewalk project will run along Hwy 240/Church Street which will connect the center of town and students at Central Methodist University to essential shopping services on the southeast side of town.

Two other projects also received funding this cycle in the MPO areas of Mid-MO RPC. St. Martins received funding for pedestrian improvements along Business 50, and the City of Columbia received funding for a sidewalk project along Leslie Lane.



Transportation Advisory Committee (TAC)

TAC is an advisory committee which is responsible for identifying and prioritizing transportation issues as they impact the Mid-Missouri region. The committee is responsible for making recommendations each year during Mid-MO RPC's annual update to the region's transportation needs list and also assists with setting regional priorities for certain MoDOT grant funding opportunities. A variety of stakeholders including representatives from counties, cities, Metropolitan Planning Organizations (MPO), MoDOT engineering and planning staff, and engaged citizens all contribute to the conversation at TAC meetings.



TAC Chair Howard McMillan
Howard County Commissioner

EMERGENCY PREPAREDNESS

Overview

An important component of our technical assistance services is assisting our local governments prepare for and mitigate the impact of future disaster events. We accomplish this by working with our cities and counties to ensure that they have updated FEMA approved hazard mitigation plans, by assisting with emergency management related grants, and by providing administrative support to the Region F Regional Homeland Security Oversight Committee (RHSOC).

Hazard Mitigation Planning

Hazard mitigation planning seeks to reduce the loss of life and property by reducing the impact of disasters. Hazard mitigation plans identify natural disasters that impact the study area and develop actions to reduce the impact of these events. Having a FEMA approved local hazard mitigation plan is a requirement for local governments and school districts in order to be eligible for FEMA hazard mitigation grant funding.

Mid-Missouri Regional Planning Commission is responsible for updating the hazard mitigation plans for all six of our counties. Plans are updated every five years. These plans also incorporate city governments and school districts in each respective county, which eliminates the need for each jurisdiction to have their own individual plan.

Grant Writing Assistance for Emergency Preparedness

Grant writing assistance is a core activity of the Mid-Missouri Regional Planning Commission. When it comes to grant writing for emergency preparedness, our primary focus is on FEMA hazard mitigation grant funding and FEMA assistance to fire fighters grants.

FEMA hazard mitigation grants allow cities, counties, and school districts to implement hazard mitigation strategies identified in hazard mitigation plans to reduce the impact of future natural disasters. Projects eligible for FEMA hazard mitigation grant funding include: tornado safe rooms, flood buyouts, stormwater improvements, undergrounding utility lines, warning sirens, generators, and more. In order for proposed projects to be competitive for funding, a benefit-cost analysis (BCA) of the project must be completed to FEMA standards. Mid-MO RPC is proud to now have the capability to perform these BCAs for our communities, which will reduce this barrier for our communities to apply for this source of grant funding moving forward.

FEMA's Assistance to Firefighters Grant Program (AFG) is designed to enhance the safety of the public and firefighters during the course of fire-related events. The program provides direct financial assistance to eligible fire departments and nonaffiliated emergency medical service organizations (EMS). AFG grants can be used to fund firefighter equipment needs like personal protective equipment, communications equipment, extrication tools, and EMS equipment. AFG funds can also be used to replace unsafe or inoperable vehicles. Funding for vehicle replacement is highly competitive.

Mid-MO RPC completed an AFG vehicle acquisition grant application this past year for Fayette, which is still awaiting a funding decision. We look forward to assisting Centralia with an AFG application this year for equipment purchases.

Region F Regional Homeland Security Oversight Committee (RHSOC)

The Mid-Missouri Regional Planning Commission is responsible for assisting the Region F Regional Homeland Security Oversight Committee (RHSOC), in conjunction with the Department of Public Safety, in developing a planning process to assess, evaluate, identify, and prioritize existing and needed Homeland Security assets. This planning process is used as a basis for funding and policy recommendations from the region.

The Region F RHSOC uses discipline representatives to provide activity recommendations. The committee is comprised of one representative from the following 16 core positions or disciplines: Director of Emergency Management, Chief of Police, County Sheriff, Chief of Fire, County Health, Homeland Security Response Team, City or County Public Works, Mayor or City Administrator, County Commissioner, Private Industry/Public Utility, Emergency Medical Service, 911, Agriculture, Volunteer Sector, Education, and GIS Mapping.



RHSOC Chair Randy White
Retired Fire Chief
Columbia MO



Regional Homeland Security Oversight FY18 Project Funding

The Region F Homeland Security Oversight Committee region was awarded \$273,000 for FY18 grant projects through the State Homeland Security Grant Program. The grant performance period of two years runs from September 1st, 2018 through August 31st, 2020. Below are the projects either completed or in process.

\$86,000 – 175kW Generators – Camden and Gasconade County. Camden and Gasconade counties were each awarded funding for a towable 175 Kw power generator with power cable and toolbox accessories. These will be used as regional assets that will be deployed where needed both within Region F and the state of Missouri.

\$35,280 – City of Columbia Homeland Security Response Team. AreaRAE Pro with License. This would allow replacement of two of their four area monitors currently in service. Both are approximately 10 years old and are increasingly expensive to maintain.

\$31,000 – Cole County Homeland Security Response Team. Detection meters for chemical residue testing, Multi Rae Air Sampling and explosive residue monitoring. When unknown chemicals are either a ground source or dispersed in the air, these detectors can monitor to provide needed information to the on-scene incident command. Radio communications equipment will also be upgraded for emergency responders wearing Self-Contained Breathing Apparatus (SCBA) in an incapsulated chemical hazard suit. This specialized communications equipment allows the responder to have voice contact per portable radio to the team members and with incident command while working in extreme life-threatening chemical hazards.

\$20,300 – Cole County Mobile Emergency Operations Center. Camera, Video and Monitor Enhancements. Replacement of camera used with outside elevated mast. Original unit was purchased in 2007. The new unit will improve night vision capabilities. An elevated video platform camera will also be replaced which will be used for search and rescue operations in nighttime incidents and assist with Fire, Law Enforcement, Haz Mat and Emergency Management incidents during aerial surveillance. Funding will also upgrade computer aided dispatch monitors.

\$13,000 – Audrain County – Electronic Board Sign. The solar powered sign will allow for the dissemination of critical information to citizens and responders during a disaster, evacuation, or other event.

\$15,110 – First Responder Personal Protective Equipment (PPE) – Callaway and Osage County. Personal Protective Equipment (PPE) is vital for first responders as they respond to natural or man-made disasters. The health departments for Callaway and Osage counties will each receive a PPE cache that will be ready to be deployed regionally when necessary.

\$6,851 – Boone County Emergency Management Office – Incident Support Trailer (IST). Annual Cradlepoint/ satellite phone services for mobile Incident Support Trailer (IST).

\$3,780 – Boone County Emergency Management Office – Radio battery project. Radio batteries to be used by Boone County Emergency Management, Missouri Task Force-One, Boone EMS, University EMS, City of Columbia Fire Department, Boone County Joint Communications (911), and the Columbia Regional Airport.

\$61,462 – Sustainment. Funding for sustaining current equipment as well as management and administration paid to the RPC for handling all aspects of the funding cycle. Some of this sustainment money will go towards the annual generator load testing as well as annual license fees for Elliott systems.

Mid-MO RPC Staff Members



David Bock - Executive Director

Responsible for the overall project management as well as operational and personnel oversight of Mid-MO RPC activities. He served as Mid-MO RPC's Community and Economic Development Planner for five years before taking on the role of Executive Director for the organization in 2018. He has provided assistance and/or oversight on more than 30 projects involving grant funding support within the Mid-Missouri region. He holds a Master's Degree in Public Affairs from the University of Missouri with an emphasis in public policy analysis.



Sierra Thomas - RHSOC Coordinator/Fiscal Officer

Serves as the procurement agent for the thirteen counties that make up the Region F RHSOC and functions as the RPC Fiscal Officer. She also serves as Hazard Mitigation Planner. She holds a bachelor degree in Crisis and Disaster Management from University of Central Missouri with an undergraduate certificate in Business Continuity. She was previously employed as Camden County Continuity of Operations (COOP) Planner and was later promoted to Camden County Assistant Emergency Management Director.



Debra Griffin - Administrative Assistant

Provides administrative staff support in project development activities and has been with the organization since 2011. Her responsibilities include maintaining the Mid-MO RPC website, as well as, developing quarterly newsletters and preparation of the annual report. She has years of secretarial and administrative experience, is a former computer operator for Electric Data Systems (EDS), Plano Texas, with seven years as computer room supervisor with a Tulsa, Oklahoma based credit union.



Lincoln Brown - Community and Economic Development Planner

Provides services to communities throughout their project development cycles, ranging from economic analysis to grant writing and grant administration. He has written grants for Missouri's Community Development Block Grant (CDBG) Program, FEMA's Assistance to Firefighters Grant Program, and for the Federal Home Loan Bank's Affordable Housing Program. He administers CDBG funds and conducts the necessary environmental reviews. Additionally, he has completed a benefit cost analysis for a flood mitigation project. Lincoln holds a Master's Degree in Public Affairs from the University of Missouri with an emphasis in public policy analysis.



Jennifer Bowden - Transportation Planner/GIS Specialist

As the GIS Specialist and Transportation planner for Mid-MO RPC, she handles transportation related plans and initiatives, as well as GIS mapping projects throughout the region, while also putting focus on providing writing assistance for recreational and transportation related grant applications. She has a B.S. in Geospatial Science with a minor in Land Surveying from Missouri State University, along with several year's industry experience in GIS data coordination and mapping.

Mid-Missouri Regional Planning Commission

Mid-Missouri Regional Planning Commission
206 East Broadway
P.O. Box 140
Ashland, MO 65010 | U.S.
Phone (573) 657-9779 Fax (573) 657-2829



Visit Mid-MO RPC online at <http://midmorpc.org>