



2017

Annual Report

Mid-Missouri
Regional
Planning Commission

Mid-Missouri Regional Planning Commission

Organization and Structure

The Mid-Missouri Regional Planning Commission (Mid-MO RPC) is a voluntary organization comprised of local units of governments [both counties and cities] within a six-county region. Members are assessed a membership fee based upon the population of the community. In addition to the money generated by local membership fees, the Mid-MO RPC (along with other rural regional planning commissions) receives funds from the State of Missouri to offset the costs of providing assistance to its members. The remaining balance of the Mid-MO RPC operating budget comes from fees the commission collects for administering various state and federal programs and projects on behalf of the counties and cities in the region.

The State of Missouri's 114 counties have been divided into 19 regional planning commissions. These 19 regional planning commissions join together to form the Missouri Association of Councils of Government (MACOG) in order to explore common interests and improve their ability to balance their many roles. The legal basis for regional planning commissions is derived from Chapter 251 of the Revised Statutes of Missouri. The Missouri Legislature enacted the State and Regional Planning and Community Development Act in 1965.

Our Goals

Organizational oversight is provided by our Board of Directors. Board membership is comprised from representatives of each county government and two cities within each county. The Board also designates two at-large members. Officers are elected by the Board to serve as our executive committee which provides additional oversight of operations. The overall purpose of the Mid-MO RPC is to increase communication, cooperation, and coordination between its member governments in planning and developing policies and activities for the orderly development of the Mid-Missouri region.

Our members have adopted the following goals for the organization:

- Serve as an advocate for the region
- Serve as a resource for member governments
- Provide a forum for local officials to discuss regional issues and concerns
- Provide professional staff to assist member governments
- Promote community and economic development

Board of Directors met June 2017 to review and adopt fiscal year 2018 work program.





The 2017 fiscal year was another productive year for the Regional Planning Commission. With the assistance of two great interns, the RPC staff was able to make things happen. The RPC helped with twenty projects supporting economic and community development in the region. They also accommodated the preparation of six grant applications for funding, five environmental assessments, and nine project developments. Three of these projects have received funding amounting to \$3.5 million. Work continues on many projects for the region, including environmental studies, strategic planning, mapping needs, hazard mitigation plans, and various others.

It has been a great two years as Chairperson of this organization. I would like to give a huge thanks to the staff and to the board for their ongoing teamwork and support. Please take the time to get to know this group. You will not be disappointed!

Gary Jungermann
Callaway County Presiding Commissioner



It is always our goal the work the planning commission undertakes can and does make a positive difference within our region. We strive to be a valuable resource for our local government membership.

As you read though the 2017 Annual Report for the Mid-Missouri Regional Planning Commission and our activities and accomplishments, a well-deserved thank you goes to our local governments for their continued support of their planning organization.

I also would like to thank my co-workers for their individual and collective work ethic, and our Board of Directors for providing oversight and guidance. RPC staff and I would like to extend a special thank you to our 2017 Chairman-Callaway County Presiding Commissioner Gary Jungermann for his “can-do” influence and consistent support of the RPC.

As always, RPC staff would like to express their gratitude for the confidence that you place in our capabilities.

Ed Siegmund
Executive Director

2016-2017 EXECUTIVE OFFICERS



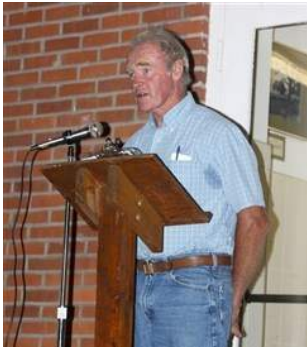
Chairman
Gary Jungermann



Past Chairman
Dan Atwill



Vice-Chairman
Kris Scheperle



Secretary
Sam Stroupe



**Treasurer
Budget Chairman**
Tim Grenke



Personnel Chairman
Les Hudson

BOARD OF DIRECTORS

Boone County

Dan Atwill - Boone Co.
Gene Rhorer - Ashland
Tim Grenke - Centralia

Cole County

Kris Scheperle - Cole Co.
Steve Crowell - Jefferson City
Virginia Bayne - St. Martins

Howard County

Sam Stroupe - Howard Co.
Robin Triplett - Fayette
Walter Banks - New Franklin

Callaway County

Gary Jungermann - Callaway Co.
Les Hudson - Fulton
Rick Hess - Holts Summit

Cooper County

Don Baragary - Cooper Co.
Julie Thacher - Boonville
VACANT - Otterville

Moniteau County

Kenneth Kunze - Moniteau Co.
Norris Gerhart - California
Mike Kelley - Tipton

At-Large-Members

Marsha Broadus
Darrel King

Mid-MO RPC Region



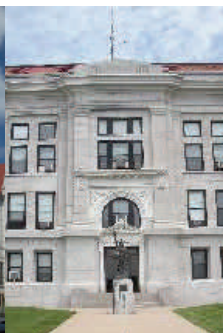
Boone County



Callaway County



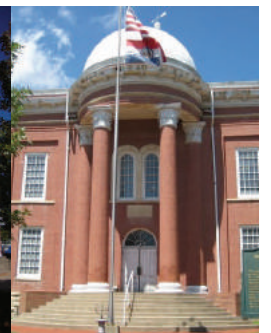
Cole County



Cooper County



Howard County



Moniteau County

Collaboration and Partnerships 2016-2017

The work activities carried out by the Regional Planning Commission would not be possible without the collaboration and partnerships with numerous federal and state agencies. These established relationships assist with financial and technical support on projects identified by our local government membership. During the 2016 -17 fiscal year, this collaboration and partnerships is contributing to projects and funding support of over \$3.2 million in our region.

Economic Development Administration \$ 66,000
 Development of Comprehensive Economic Development Strategy
 Technical Support in Project Development



Missouri Department of Economic Development (CDBG)
 Boone Co. Infrastructure(American Outdoor Brands) 1,840,860
 Russellville Wastewater 500,000
 Armstrong Infrastructure 377,477
 CDBG Disaster Planning 34,600
 (note:\$10,000 Phase1-Phase 3:2@\$12,300)



Missouri Department of Natural Resources
 Our Missouri Waters Initiative 5,000
 (Lower Missouri-Moreau River)



Missouri Department of Transportation
 Planning Support Partnership 64,705
 Human Services Coordinated Transp. Plan Update 20,000
 Mobility Management Initiative 69,577



Office of Homeland Security
 RHSOC Regionalization Program 20,000
 RHSOC Management /Administration (Pass-thru) 233,918



State Emergency Management
 Cole County Hazard Mitigation Plan 20,000
 Cooper County Hazard Mitigation Plan 20,000



TOTAL FUNDING SUPPORT AWARDED \$ 3,272,137



COMMUNITY AND ECONOMIC DEVELOPMENT

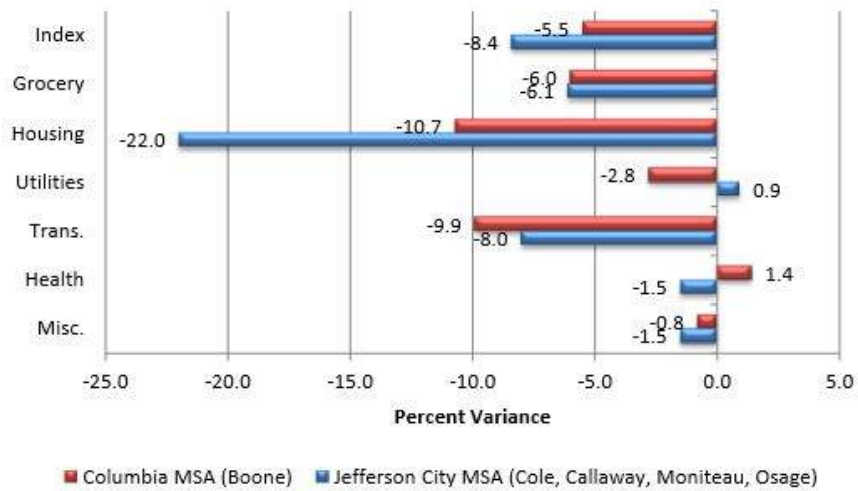
Overview

Mid-MO RPC's partnership with the federal Economic Development Administration (EDA) is a vital component of Mid-MO RPC's community and economic development program. Mid-MO RPC is recognized by EDA as an Economic Development District (EDD), a status which allows Mid-MO RPC member communities to apply for EDA grant funding for capital improvements and provides direct funding from EDA to Mid-MO RPC each year. This direct funding allows Mid-MO RPC staff to spend time providing technical assistance services to communities. Technical assistance activities include working with communities to identify funding sources, preparing grant applications, completing planning studies, providing strategic planning assistance, and performing GIS mapping services.

Mid-MO RPC Board Adopts Comprehensive Economic Development Strategy

Mid-MO RPC is required to maintain an updated regional Comprehensive Economic Development Strategy (CEDS) in order to keep its designation as an EDA Economic Development District. A major update to the CEDS is required every 5 years. Mid-MO RPC completed this update with the assistance of local and state economic development stakeholders, and the Mid-MO RPC Board of Directors approved the updated plan in August of 2016.

Cost of Living Index Comparison: Mid-MO RPC Region and National Average



The updated CEDS gives an overview of the regional economy and identifies the region's strengths and weaknesses. It also identifies potential economic development opportunities over the next five years and lays out economic development goals and strategies for achieving these goals.

Target industry clusters identified in the plan include plastics product manufacturing, bioscience, financial solutions, health and science services, information technology, distribution and electronic commerce, and nuclear industries.

A copy of the full CEDS update can be found on Mid-MO RPC's website at www.midmorpc.org/reportslibrary/.

Economic Development Advisory Committee (EDAC)

A critical partner in our economic development program is the Economic Development Advisory Committee (EDAC). EDAC is comprised of community leaders throughout the region including economic development professionals, elected officials, utility provider representatives, chamber of commerce representatives, senate and congressional staff, university officials, and other interested parties.

The committee's function is to provide a forum for the exchange of ideas to promote economic development in the region.



EDAC Chair Mike Kelley
Moniteau County Regional Economic
Development Council

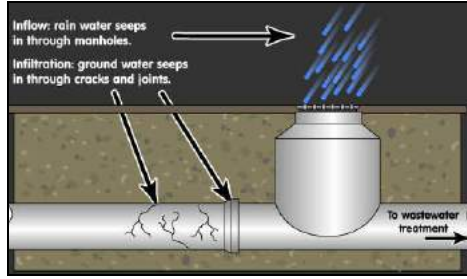


5. Holts Summit Road Improvements for Pro Food Systems Expansion



The City of Holts Summit secured a \$260,000 CDBG grant to widen N. Greenway Drive to support the expansion of Pro Food Systems. The expansion has created more than 26 new jobs. Mid-MO RPC assisted with preparing the grant application, prepared the environmental review and also served as the grant administrator.

6. Holts Summit Inflow and Infiltration Mitigation



The City of Holts Summit secured a \$315,000 CDBG grant to fix inflow and infiltration (I&I) issues in two of the city's older subdivisions. Mid-MO RPC assisted with preparing the grant application, prepared the environmental review, and is serving as grant administrator. Construction is anticipated to begin in 2018.

7. St. Thomas Demolition



The City of St. Thomas secured a CDBG grant to abate asbestos and demolish four vacant houses. Mid-MO RPC assisted the city with preparing the CDBG application, prepared the environmental review, and served as grant administrator. The RPC also took an active role in contractor procurement for this project.

8. Russellville Wastewater Treatment System Improvements



The City of Russellville has been awarded a \$500,000 CDBG grant to make improvements to its wastewater treatment system. Mid-MO RPC prepared the CDBG grant application and completed the environmental review required by both CDBG and USDA-RD. Mid-MO RPC will also serve as grant administrator on the project.

9. Lohman City Hall / Community Center ADA Improvements



The City of Lohman is seeking a CDBG grant to complete ADA improvements to its City Hall/Community Center. Improvements would include an ADA compliant ramp and bathroom renovations. Mid-MO RPC prepared the CDBG grant application and will serve as grant administrator if the project is awarded CDBG funding.

10. Moniteau County Low Water Crossings Mapping



Mid-MO RPC is creating a GIS map of low water crossings in Moniteau County. The final product will show every low water crossing in the county and distinguish between various types of low water crossings. The mapping tool can be used to assist county officials in prioritizing maintenance and safety projects.

11. Bunceton Wastewater Treatment System Improvements



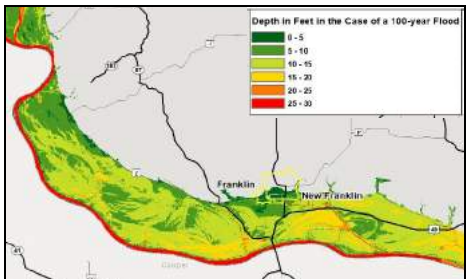
The City of Bunceton has been awarded a \$500,000 CDBG grant to make improvements to its wastewater treatment system. Mid-MO RPC prepared the CDBG grant application and completed the environmental review required by both CDBG and USDA-RD. Mid-MO RPC will also serve as grant administrator for the project.

12. Armstrong Street Overlay and Inflow and Infiltration Mitigation



The City of Armstrong secured a \$377,477 CDBG grant to overlay approximately 1/3 of the city's streets. The City will also be raising 12 manholes which are currently causing I&I issues. Mid-MO RPC staff prepared the CDBG application, prepared the environmental review and will be serving as grant administrator for the project.

13. Cooper, Howard and Moniteau County Hazard Mitigation Plans



Mid-MO RPC completed 5-year updates of the Hazard Mitigation Plans (HMP) for Cooper, Howard and Moniteau counties. HMPs identify actions to reduce or eliminate risk to life and property from natural hazards. The plans are required in order for jurisdictions to qualify for FEMA hazard mitigation grants.

OUR PROJECTS -- A CLOSER LOOK

These projects may help you recognize opportunities to develop similar projects in your community.

Boone County Infrastructure Improvements for American Outdoor Brands

Mid-MO RPC assisted Boone County with acquiring \$1.8 million in Community Development Block Grant (CDBG) funding to make improvements to Route Z and Clark Lane in Boone County to support the recently announced American Outdoor Brands (AOB) distribution center.

It is estimated that AOB will be investing at least \$40 million to build the new 500,000 sq. ft. distribution center. In order for Boone County to secure CDBG grant funding, AOB has committed to hiring at least 93 new employees. At least half of these jobs will go to low-to-moderate income individuals. AOB projects that as many as 328 jobs will be created at the new facility.

A development of this size puts strain on the existing transportation network. The CDBG grant will allow Boone County to make the needed infrastructure improvements without exhausting the county's existing transportation funding resources, which have already been committed to other projects in the county. Improvements associated with this project are anticipated to include grading of Route Z near the new AOB site to improve site distance, a right turn lane on Route Z at one of the proposed employee entrances, and signalization at the intersection of Route Z and I-70 east off-ramp. A new section of Clark Lane will also be constructed just south of the AOB site.



Mid-MO RPC's role to date has been to complete the CDBG grant application and the federally required environmental review of the project site. As the project moves forward, Mid-MO RPC will be serving as CDBG grant administrator on behalf of Boone County. Mid-MO RPC will be responsible for ensuring all state and federal CDBG requirements are met including prevailing wage, procurement, and civil rights compliance.

Bunceton and Russellville Wastewater System Improvements

Wastewater regulations requiring lower levels of ammonia in wastewater discharge have become a major issue for several communities in mid-Missouri and around the state. The cities of Bunceton and Russellville are two of the most recent communities impacted by these ammonia requirements. Both cities will be converting their existing lagoon-based treatment systems to moving bed biofilm reactor (MBBR) systems over the next two years.

Both communities are using a common strategy to finance these wastewater system improvements. They will be using USDA-RD loan and grant funding in combination with a \$500,000 Community Development Block Grant (CDBG) to pay for the improvements. Sewer rate increases will also be necessary in both communities in order to pay back the USDA-RD loan; however, the grant funding does not need to be paid back and will allow sewer rates to remain as low as possible.

Mid-MO RPC assisted both Bunceton and Russellville with completing the CDBG grant application and environmental review. Mid-MO RPC will also be serving as the CDBG grant administrator for both projects and will ensure that all state and federal requirements are satisfied as the project moves forward. This includes checking payrolls and making site visits to ensure prevailing wage compliance and ensuring that procurement and civil rights requirements are followed.

Armstrong Street Improvements and I&I Mitigation

The City of Armstrong has been working to address its two largest infrastructure needs: deteriorating city streets and inflow and infiltration (I&I) of stormwater into the city's wastewater system. Mid-MO RPC staff has provided Armstrong with technical assistance as the city has worked through these issues.



Mid-MO RPC staff was involved in early conversations between the city and MoDNR regarding how to reduce the city's inflow and infiltration problems. From these conversations, the city and MoDNR worked out an agreement that the city would begin installing manholes risers throughout the community as an I&I mitigation strategy. During these meetings, the city also expressed a need to pave several of its city streets and the desire to combine the road paving and manhole raising into a single project. The city, however, did not have funding to complete the road paving portion of the project.

Mid-MO RPC staff then worked with the city to secure \$377,477 in Community Development Block Grant (CDBG) funding to pay for the road paving portion of the project. The city will be able to complete the manhole riser installation itself and then use this manhole work as an in-kind match to the CDBG grant. The large amount of in-kind match combined with a cash contribution by the city made for a strong CDBG application. Road construction is expected to be completed by the end of October 2017.

Centralia Comprehensive Plan

Centralia community leaders are in the process of updating the city's comprehensive plan. Mid-MO RPC was brought in to help coordinate the planning process and complete the plan update.

The focus of the planning process to date has been citizen participation, with City Administrator Matt Harline taking the lead on encouraging citizen engagement. Local participation in the planning process has been excellent. Four subcommittees have combined to have a more than a dozen meetings. These meetings have focused on economic development, transportation, land use, utilities, public works, the environment, community facilities, emergency management and resiliency issues. The subcommittees have focused on identifying community needs in each of these focus areas and have made preliminary recommendations for how these community needs should be addressed.



The goal of plan is to provide both a long-term vision for Centralia and a short-term capital improvement plan that provides a list of utility, transportation, economic development and community facility projects that can help achieve the long-term vision.

With the initial round of subcommittee meetings complete, Mid-MO RPC staff have been writing the preliminary draft of the plan update. Once the preliminary draft is complete, RPC staff will present it to the subcommittees for review and comment before the final plan is taken to the City Council for consideration.



Transportation Advisory Committee (TAC)

The TAC is an advisory committee responsible for representing the transportation needs of its member counties and cities and communicating these needs to the Mid-MO RPC. Composed of local city and county officials, Metropolitan Planning Organization (MPO) representatives, MoDOT District Engineers, and engaged citizens. This group is representative not only of the six member counties of the region but of a broad cross-section of community sizes, disciplines, and interests. Each member county and city is asked to provide representation on the TAC committee.



TAC Chair Kenneth Kunze
Moniteau County Presiding Commissioner

Project Prioritization

On an annual basis, Mid-MO RPC thru coordination with the TAC and local government membership reviews and updates our regional transportation needs list. Projects that have a high priority in the Mid-MO region include I-70 improvements, 2 foot shoulders on state lettered routes, US 63/I-70 interchange improvements, Missouri River port study (Jefferson City area/Callaway County), and the Columbia Regional Airport. A more detailed list is available on our website and the Mid-Missouri Regional Transportation Plan.

Technical Assistance

- Assisted with the development cost share applications (Cooper/Callaway counties)
- Assisted with the development of Transportation Alternatives Program projects (Ashland/Pilot Grove)
- Assisted TAC with prioritization and funding recommendation for projects submitted for funding assistance under the Transportation Alternatives Program
- Assisted Boone and Callaway Counties in the preparation of a Federal Lands Access Program (FLAP) grant for the replacement of Burnett School Road Bridge located within Mark Twain National Forest
- Inventoried and created a GIS database and accompanying map of Moniteau County low water crossings



Regional Transportation Plan 2016

In March 2016 RPC staff completed a full update of the *Mid-Missouri Regional Transportation Plan 2016*. The plan is fully updated every 5 years, and is an important planning tool for the membership and decision makers, as it contains:

- An overview of the transportation planning framework at the regional and state level
- A listing of the goals and objectives of the Mid-Missouri Transportation Advisory Committee
- An analysis of regional demographics and trends
- A multi-modal overview and inventory of regional transportation systems
- A prioritized list of regional transportation needs
- An overview of funding sources

The current update of the Regional Transportation Plan incorporates both road and bridge projects and multi-modal systems and infrastructure such as airports, rail, transit, ports, and bicycle and pedestrian facilities. The update process also took into account a multitude of local, regional, and state plans and studies that have recently been completed.

Advance Transportation Needs

For the past two years Mid-MO RPC staff has been working alongside several regional transportation stakeholders as part of a planning grant to increase regional coordination of transportation access. Funded by the Missouri Department of Transportation and the Missouri Developmentally Disabilities Council, this two year planning project is focused on identifying and alleviating transportation barriers for challenged populations. Coined “Mo Rides Central Missouri” the project is being developed through a subcontract with the Central Missouri Community Action. Anthony Nichols, the project’s mobility manager is spear heading the “Mo Rides Initiative”. Focusing on improving access and efficiency of transit services, Mo Rides receives calls regarding transportation assistance for a wide variety of purposes and locations, with visits for health care being the most requested.

Federal Lands Access Program (FLAP): Burnett School Road Bridge

Mid-MO RPC assisted Boone and Callaway counties acquire a \$680,000 grant from the Federal Lands Access Program (FLAP) to replace the Burnett School Road Bridge, which spans Cedar Creek within the Mark Twain National Forest. The bridge was closed in October of 2016 due to structural safety concerns.

The new bridge will restore the level of access to Mark Twain National Forest in Boone and Callaway counties, which includes 35 miles of trails, the University of Missouri Basket Ball Wildlife Research and Education Center and 67 homes within two miles of the bridge.



EMERGENCY PREPAREDNESS

Overview

A component of our technical assistance support services is assisting our local membership with emergency preparedness activities. These activities are aimed to allow local governments in the area to avoid and/or lessen the impact of disaster events. The two primary preparedness activities we assist with are preparation and updates of the hazard mitigation plans, and providing administrative support to the Area F Regional Homeland Security Oversight Committee (RHSOC) – representing a 13 county area in Mid-Missouri.

Hazard Mitigation Planning

This planning effort seeks to reduce loss of life and property by lessening the impact of disasters. The plans identify natural hazards that impact the study area, develop strategies and activities to lessen the impact of the hazard event, and identify implementation responsibilities. All local governments, including school districts, must have a FEMA-approved plan as a condition for receiving hazard mitigation grants. The plans are to be updated on a five-year cycle.

Under the Stafford Act, local governments are required to develop a hazard mitigation plan as a condition for certain types of non-emergency disaster assistance, including funding for mitigation projects. The planning process creates a framework for local jurisdictions to evaluate and recommend actions to reduce the impacts of disasters on lives, property, and the economy.

Mid-MO RPC Completes Three Plans

This past year, the Mid-MO RPC staff updated four hazard mitigation plans: Cooper County, Howard County, and Moniteau County. The updates included an update to each county’s list of mitigation actions-or what they would do over five years to become more resilient to natural disasters. An element of the update is identifying gaps or successes in hazard preparedness.



Moniteau County low water crossing.

In 2012, Moniteau County created a mitigation action to map all of their low-water crossings. As a direct result of the hazard mitigation plan update, Mid-MO RPC took up this action for Moniteau County and has produced a guide book of all of the low-water crossings with GPS coordinates and correlating photos.

As the planning process took place, it became evident that Cooper County needed warning sirens. There have been efforts to move forward on this issue for Cooper County, but in the process, it has been identified that towns in Moniteau County also need warning sirens. After working on three plans this year, it is further

evidence for the need to look at issues from a regional prospective. Issues for one county are often issues for another and there is value in numbers when solving gaps such as warning sirens. Mid-MO RPC will continue to work on the issue of warning sirens over the next year and begin to visit other issues identified over the planning process.

REGION F HOMELAND SECURITY OVERSIGHT COMMITTEE



The Region F Homeland Security Oversight Committee (RHSOC) is comprised of representatives from the following

disciplines: 911, Agriculture, County Governments, Education, Emergency Management, Emergency Medical Services, Fire, GIS, Health, Homeland Security Response Teams, Municipal Governments, Police, Public Works, Private Industry/Public Utilities, Sheriff, and Volunteers from the counties of Audrain, Boone, Callaway, Camden, Cole, Cooper, Gasconade, Howard, Miller, Moniteau, Montgomery, Morgan, and Osage Counties. For more information, see midmorpc.org/rhsoc.

One of the main goals of the Regional Homeland Security Oversight Committee is to sustain the existing and current emergency response equipment throughout the region. For example, each year, counties that apply can have a generator load testing and inspection done on large generators to ensure their readiness in the event of a disaster or emergency. While it is not allowable for the grant to pay for maintenance on these generators, these load testing and inspections save county dollars and help to keep this valuable asset operational.

Some of the other ways that this Homeland Security Grant Program can help to sustain existing equipment is through purchasing replacement batteries for P-25 compatible or MOSWIN radios, paying for service contracts or needed upgrades on equipment such as Elliot Data badging systems, M-STAT services for Mobile Emergency Operations Centers, Area Rae supplies, software upgrades, calibrations and annual testing for equipment, as well as items that have a shelf life and need to be replaced like SCBA cylinders, gas masks, filters, etc.



EQUIPMENT PROJECT HIGHLIGHTS



Portable electronic message boards were purchased and housed in the following Region F counties: Camden, Cooper, Howard, Montgomery, and Osage. These message boards will be put to use immediately as they will provide a much needed communication asset in advising visitors of potential traffic control issues, such as the recent solar eclipse event.

The next round of grant funding will provide for the purchase of an additional seven portable electronic message boards that will be housed in the counties of Boone, Audrain, Callaway (2 boards), Cole (2 boards), and Osage.



This portable outdoor warning system was recently delivered to Cole County Emergency Management Agency. This trailer mounted unit can be moved to different locations and activated for voice messages through a loud speaker system, as well as a siren alert system that can be used for a severe weather alert system during inclement weather. The unit has a solar panel and also it's own back up source of power so that it is considered a stand alone system.

This deployable asset helps to fill the THIRA gap to alert the public during an outdoor emergencies or planned events.



This 178 kW generator was delivered to Montgomery County Emergency Management Agency earlier this year. It will be housed with the Wellsville Fire Department and is considered a deployable asset in Region F. This size generator can support critical infrastructure, such as pump stations, in the event of a disaster or emergency.

Another 178 kW generator will be purchased in the FY17 grant cycle to be delivered to the Boone County Office of Emergency Management.

Mid-MO RPC Staff



Edward Siegmund - Executive Director

Is responsible for the overall project management, and operation and personnel oversight of Mid-MO RPC activities. He is an AICP certified planner. Has served as the Executive Director for Mid-MO RPC since 2004, and provided oversight and assistance on 48 projects involving grant funding support within the Mid-Missouri region. His previous work experience included Planning Director for the Coastal Georgia Regional Development Center, and Assistant Planning Director for St. Charles County, MO.



Lee Ann Jestis - Office Manager

Lee Ann Jestis has been with the Mid-MO RPC for over 10 years. She earned an Associate's Degree from Collin County Community College in Plano, Texas. Her duties involve fiscal reporting requirements for the RPC operations and programs, in addition to financial reporting and the procurement responsibilities of the Region F Homeland Security Grant program.



Debra Griffin - Administrative Assistant

Provides administrative staff support in project development activities and has been with the organization since 2011. Her responsibilities include maintaining the Mid-MO RPC website, as well as, developing quarterly newsletters and preparation of the annual report. She has years of secretarial and administrative experience and is a former computer operator for Electric Data Systems (EDS), Plano Texas.



David Bock - Community and Economic Development Planner

Holds a Master of Public Affairs from the University of Missouri where he focused on public policy analysis and economic development. He works with communities to secure funding for infrastructure projects and administers state and federal grants. He also serves as lead planner for economic development related planning initiatives.



Sarah Nussbaum - Regional Planner

Began work part-time on May 1st as a regional planner. She will assist with hazard mitigation planning, transportation planning, and community and economic development projects. Sarah has master degrees in public affairs and public health. Her previous work experience includes working as the Legislative Director for the Missouri Department of Economic Development and Program and Outreach Coordinator for the Missouri Energy Initiative.

Mid-MO RPC Staff

Executive Director
Edward Siegmund

Office Manager
Lee Ann Jestis

Administrative Assistant
Debra Griffin

Community and Economic Development Planner
David Bock

Reginal Planner
Sarah Nussbaum

Mid-Missouri Regional Planning Commission
206 East Broadway
P.O. Box 140
Ashland, MO 65010 | U.S.
Phone (573) 657-9779 Fax (573) 657-2829



Visit Mid-MO MRPC online at <http://midmorpc.org>